

LANA GATTO



EMPIRE

SCALLOPED PONCHO

LANA GATTO

Size: 12 (16)

NOTE: figures in brackets () refer to larger size. Where only one figure is given this refers to both sizes.

Skill Level: intermediate

How much yarn:

g 200 (300) of Empire yarn no. 8846

Needles: Pair of 5.50 mm (no. 5) knitting needles

Sewing needle: Yarn needle with rounded point

STITCHES

Garter stitch (g st) - Stocking stitch (st st)

K1, P2 rib - K2, P2 rib

TENSION

15,5 sts and 18 rows measure 10 cm square worked with the stitch with 5.50 mm (no. 5) needles.

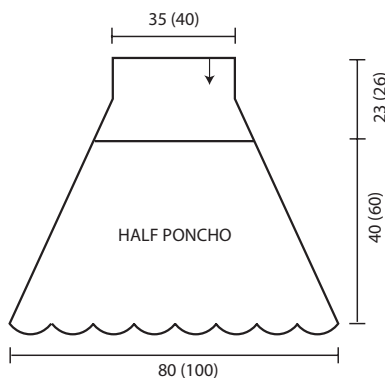
INSTRUCTIONS

Note: work poncho in one piece top down.

With 5.50 mm (no. 5) needles cast on 90 (114) sts, then work K1, P2 rib. When Collar measures 11 (12) cm from beg, on next row (RS of work) inc 30 (38) sts evenly as follows: m1 (pick up horizontal yarn between last st and next st and knit into the back of it – 1 st increased) after each K1 of rib. There are 120 (152) sts. Cont to work K2, P2 rib for other 12 (14) cm, then K next row (RS) inc 16 (18) sts evenly and P following row. There are 136 (170) sts. Now work following diagram, which represents only one scalloped motif, so rep this motif 7 (9) times more [= 136 (170) sts.]. At the end, for the 1st size, cast off the 248 sts. Instead, for the 2nd size, rep the last 6 rows of diagram until work measures 60 cm from beg, then cast off the 310 sts.

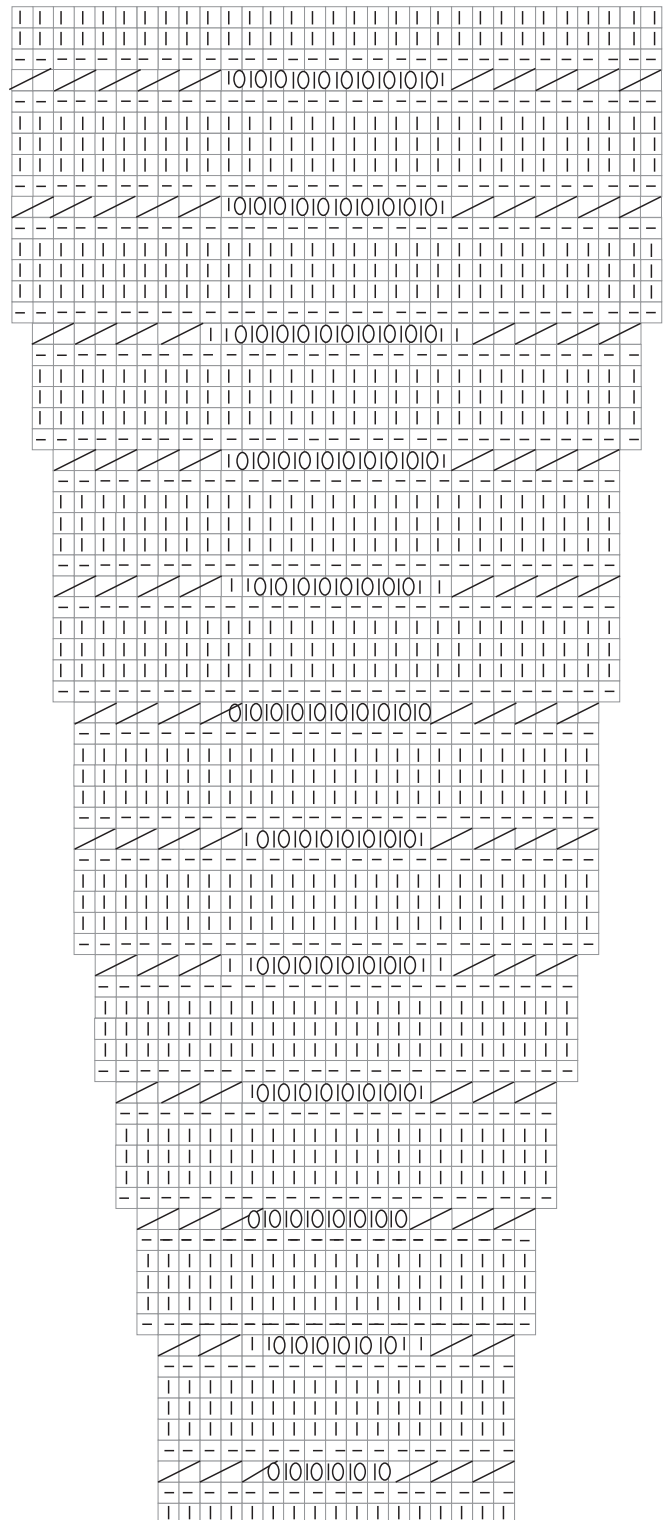
FINISHING

With yarn needle, sew vertical side seam in mattress st, considering that first 11 (12) cm of K1, P2 rib Collar will be turned inside out.



The arrow indicates the direction of work.

Diagram of a scalloped motif



Legend

- | = K1
- = P1
- = K2 tog
- 0 = yfd

Each square corresponds to 1 st and 1 row.