

Cotton
Soft

lanemondial.com

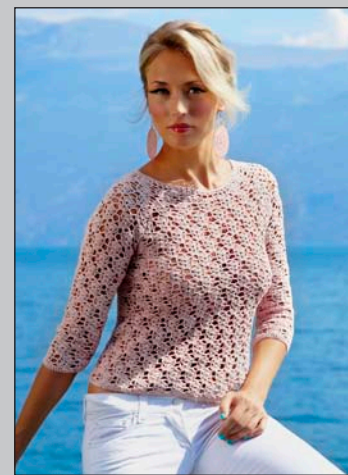
MONDIAL[®]
Filati Lana & Cotone - ITALIA





MATERIALS

- Cotton Soft 300 [300-350-350] grs. of 740 col.
- n. 300 crochet-hook
- wool round needle
- skill level: intermediate
- Size 40/42 [44 - 46 - 48]



STITCHES

Chain Stitch (ch). Slit Stitch (sl st). Single Crochet (sc). Double Crochet (dc). Patterned Stitch (Stitches multiple of 8+1): follow the diagram.

TENSION

10x10 cms. patterned worked with n. 3 crochet-hook, that's 24 sts. and 12 r.

PATTERN

Back: cast on 97 (105-113-121) ch and starting from 4th ch next to the crochet-hook, work 1 r. dc, then cont. in patterned st. according to the scheme. When the piece measures 29 (31-33-35) cms., on both sides shape the raglan, decr. 2 sts. every r. for 6 (7-8-9) times, 1 st. every r. for 9 times. At 17 (18-19-20) cms. from beg. of raglan cut and fasten thread.

Front: work as given for back up to 15 (16-17-18) cms. from beg. of raglan. For neckline shaping, stop crochet of 31 (33-35-37) central sts. and work two pieces separately; every r. and center-wards stop again crochet of 6 (6-7-7) sts., 5 (6-6-7) sts. At the same time complete raglan as given for the back.

Sleeves: cast on 57 (61-65-69) ch and starting from 4th ch next to the crochet-hook, work 1 r. dc, then cont. in patterned st. according to the scheme (only for 44 and 48 sizes, on both sides work 2 dc). On both sides incr. 1 st. every 6 r. for 5 times. When the piece measures 33 (35-37-39) cms. shape the raglan as given for the back.

FINISHING

Sew the raglan. For neckline trimming work as foll.: 1° r.: 4 ch, * skip 1 st. or 1 space, 1 dc, 1 ch *, rep. from * to *; end this and next r. with one sl st in the beg. st. 2° r.: 2 dc in ea space below. Cut and fasten thread. Sew side and sleeve seams.

